

EPSON PRINTER CERTIFICATION FOR **CITRIX** METAFRAME

The aim of this document presents the tests performed at EEE to certify the good functioning of the Epson printers on Citrix environment. For that, the tests are performed on 7 different environments including 15 printers and 6 types of drivers.

Contents

Environments	2
Printers to test	2
Drivers to test	2
The Tests performed	3
Drivers version and firmware revisions	4
Configurations	5
Preparation of the tests	5
Network tests	6
USB Tests	8
Particular drivers	10
Citrix Universal Print Driver	11

Environments:

- **Microsoft Windows 2000 Server (with Terminal Services)**
 - o Citrix MetaFrame XP FR2
 - o Citrix MetaFrame XP FR3
 - o Citrix MetaFrame Presentation Server 3.0
 - o Citrix MetaFrame Presentation Server 4.0

- **Microsoft Windows 2003 Server (with Terminal Services)**
 - o Citrix MetaFrame XP FR3
 - o Citrix MetaFrame Presentation Server 3.0
 - o Citrix MetaFrame Presentation Server 4.0

- **Citrix ICA Client**
 - o Windows XP with Service Pack 2
 - o Windows 2000 with Service Pack 4

Printers to test:

- **Color Page:**
 - o AcuLaser C1100
 - o AcuLaser C2600
 - o AcuLaser C3000
 - o AcuLaser C4000
 - o AcuLaser C4100
 - o AcuLaser C4200
 - o AcuLaser C8600
 - o AcuLaser C9100
 - o AcuLaser Color Station 8600/8600+
 - o AcuLaser CX11N

- **Mono Page:**
 - o EPL 6200
 - o EPL 6200L
 - o EPL N3000
 - o EPL N7000

- **InkJet:**
 - o Stylus C86

Drivers to test:

- ESC/Page or ESC/Page Color
- Universal monochrome driver
- PCL5c or PCL6
- Epson PostScript 3
- Adobe Generic PostScript Driver
- Citrix Universal Print Driver

THE TESTS PERFORMED

	ESC/Page or ESC/Page Color		Universal monochrome driver		Universal Color driver		PCL5c and PCL6		Epson PostScript 3		Adobe Generic PostScript Driver		Citrix Universal print Driver	
	Network	USB	Network	USB	Network	USB	Network	USB	Network	USB	Network	USB	2000	XP
AcuLaser CX11N														
AcuLaser C1100														
AcuLaser 2600/C2600							PCL5c	PCL5c						
AcuLaser C3000														
AcuLaser C4000														
AcuLaser C4100														
AcuLaser C4200							PCL5c	PCL5c						
AcuLaser C8600														
AcuLaser C9100							PCL5c	PCL5c						
AcuLaser Color Station 8600/8600+														
EPL 6200							PCL6	PCL6						
EPL 6200L														
EPL N3000							PCL6	PCL6						
EPL N7000							PCL6	PCL6						

- test carried out and successful
- under test
- functionality not available yet, or non-existent

DRIVER VERSIONS

	<i>ESC/Page or ESC/Page Color</i>	<i>PCL5c</i>	<i>PCL6</i>	<i>PostScript 3</i>
AcuLaser C1100	1.0 A / 3.00			
AcuLaser C2600	1.0 A / 3.00			1.0 A / 5.02
AcuLaser C3000	1.1 A / 3.00			
AcuLaser C4000	1.1 B / 3.00			1.0 / 5.02
AcuLaser C4100	1.0 C / 3.00			1.0 / 5.02
AcuLaser C4200	1.0 A / 3.00			
AcuLaser C8600	1.1 A / 3.00			1.0 / 5.02
AcuLaser C9100	1.0 B / 3.00	1.0 A / 1.00		1.0 A / 5.02
AcuLaser CX11N	3.00			
EPL 6200	1.0 A / 3.00			
EPL 6200+	1.1 A / 3.00			
EPL N3000	1.0 CS / 3.00		1.0 A / 1.01	1.0 A / 5.02
EPL N7000	1.0 A / 3.00		1.0 A / 1.01	1.0 A / 5.02
	Driver - Stylus			
Stylus C86	5.5 A / 4.144			

Universal Monochrome Driver: **98.00**
 Adobe Generic Postscript Driver version: **5.1.2600.1106**
 Postscript version: **3011.106.2**
 Citrix Universal Print Driver: **UPD III**

FIRMWARE REVISIONS

AcuLaser C1100	21113
AcuLaser C2600	2181222509
AcuLaser C3000	21308
AcuLaser C4000	1602820050112
AcuLaser C4100	1991120040127
AcuLaser C4200	2279922600
AcuLaser C8600	1581920020419
AcuLaser C9100	2141020957
AcuLaser CX11N	21918
EPL 6200	1970720030715
EPL 6200L	
EPL N3000	2001120030723
EPL N7000	1440920030707
Stylus C86	

CONFIGURATIONS

For all the tests, there is **one server** (Windows 2000 or 2003) and **two workstations** (one Windows 2000 and one Windows XP).

All the computers used for the tests are Dell Optiplex GX280 (Pentium 4 3,2GHz, 512 Mo) linked on an independent network.

No modifications on the driver settings after installation, except the paper size always set on A4.

PREPARATION OF THE TESTS

Preparation of the server:

- Installation of Windows Server
- Promote the server to a domain controller with DNS
- Installation of Citrix MetaFrame (see the procedure "Citrix MetaFrame Installation")
- Installation of Microsoft Office 2003
- Publish Word and Excel in the Management Console of Citrix (see the procedure "Publish Application")

Preparation of a workstation:

- Installation of Windows 2000 or XP
- Join the workstation to the domain
- Installation of the Citrix ICA Client (refer to the procedure "Citrix Client Installation")

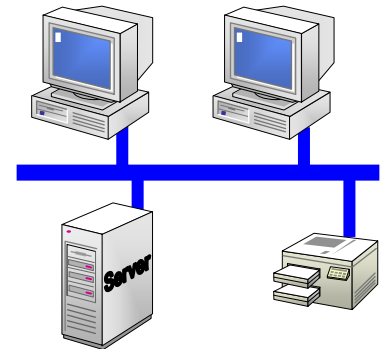
When an installation is complete, a backup is created using Norton Ghost. A clean image is restored at the end of every test.

NETWORK TESTS

Connect the printer to the network and install the driver on the server.

See the procedure “Network Printer Installation”, or the chapter “Particular drivers”.

For all kind of driver, we have to create an IP port on the host machine. For that, see the eight first steps of the Network procedure.



Once the driver installed, we can begin the tests on the two workstations:

Tests are performed by accessing to the applications with:

- the Citrix Client: Citrix Metaframe Program Neighborhood
- the Internet Explorer interface (with the IP address of the server <http://192.168.0.1> for example)

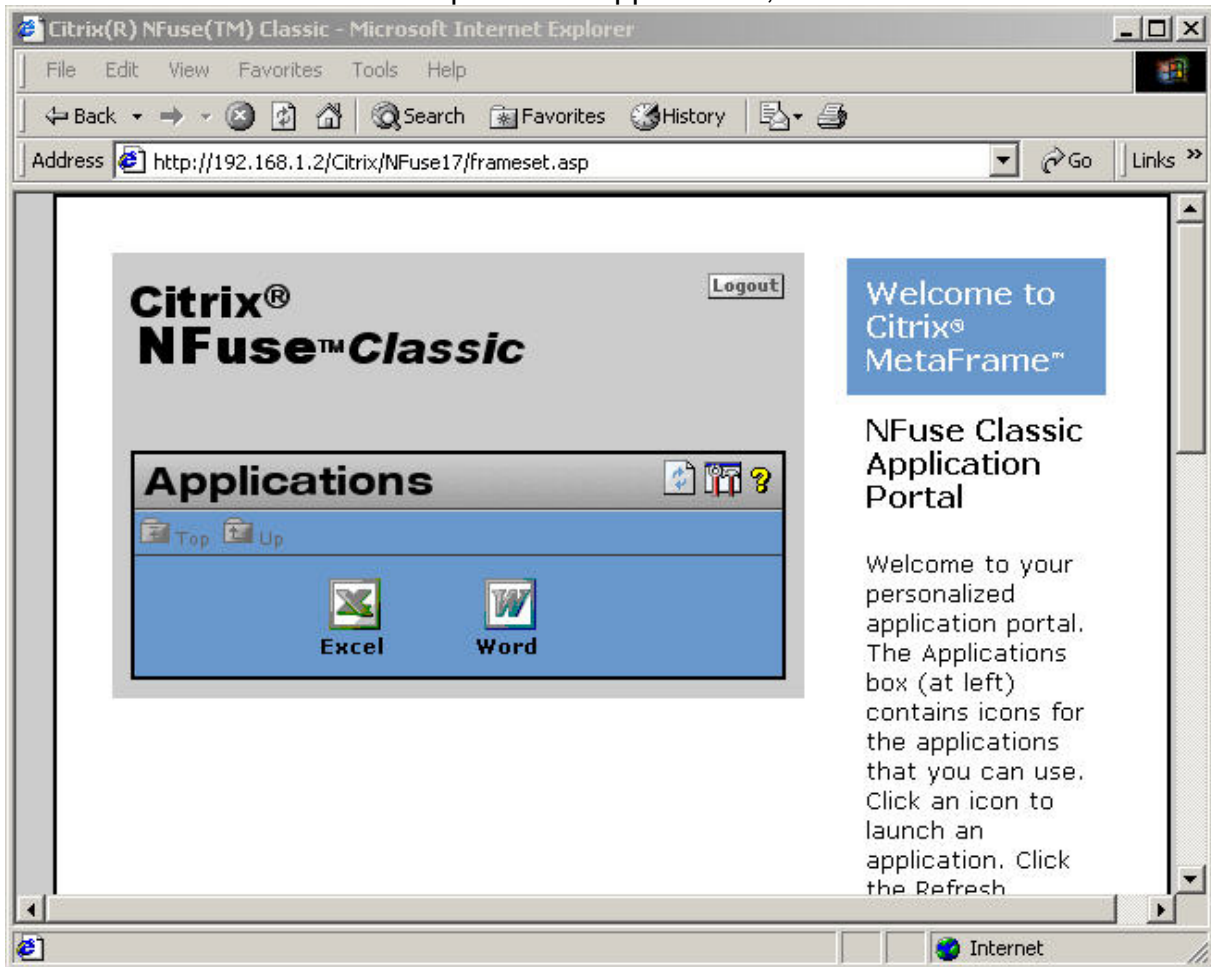


Following, the example with Internet Explorer:

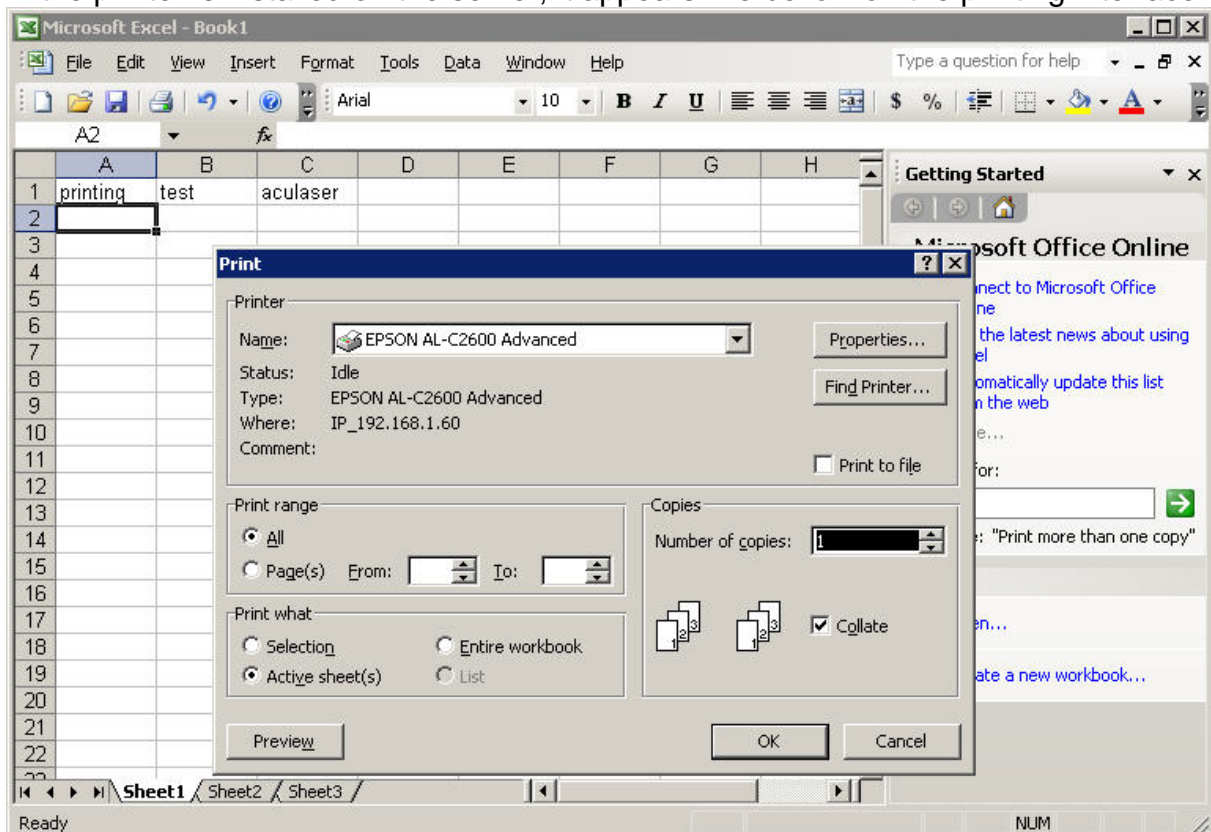
Enter the username, password and domain name and log in.

The screenshot shows a Microsoft Internet Explorer browser window titled "Citrix(R) NFuse(TM) Classic Login - Microsoft Internet Explorer". The address bar shows "http://192.168.1.2/Citrix/NFuse17/login.asp". The main content area features the "Citrix® NFuse™ Classic" logo on the left. To the right, a blue box says "Welcome to Citrix® MetaFrame™". Below this, the text "Please log in" is followed by two bullet points: "To log in to the application portal, type your user name, password, and domain name in the boxes at left." and "Click the Log In button to log in." Below the text is a "Login" form with three input fields: "Username" (containing "administrator"), "Password" (containing "*****"), and "Domain" (containing "citrix2000ad"). A "Log In" button is at the bottom right of the form. At the bottom of the browser window, the status bar shows "Done" and "Internet".

You can see now the published applications, click on one of them.



If the printer is installed on the server, it appears like bellow on the printing interface.



Conditions of success of the tests:

- No problem to launch the applications by Explorer or by the client.
- The good printer is selected and is displayed like a local printer on the print window of Office
- The printing is successful.

USB TESTS

Printer linked to the server

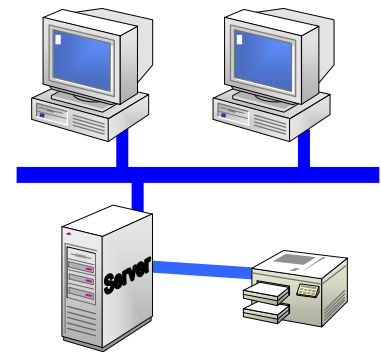
Connect the printer to the network and install the driver on the server.

See the procedure “USB Local Printer” or “Printer Installation by Setup”.

This test is exactly the same than the network one.

Conditions of success of the tests:

- No problem to launch the applications by Explorer or by the client.
- The printer is selected by default when a print is launched.
- The printing is successful.

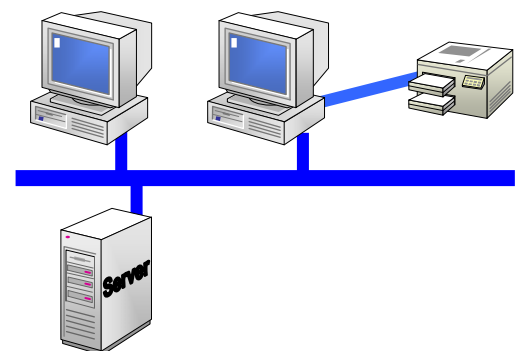


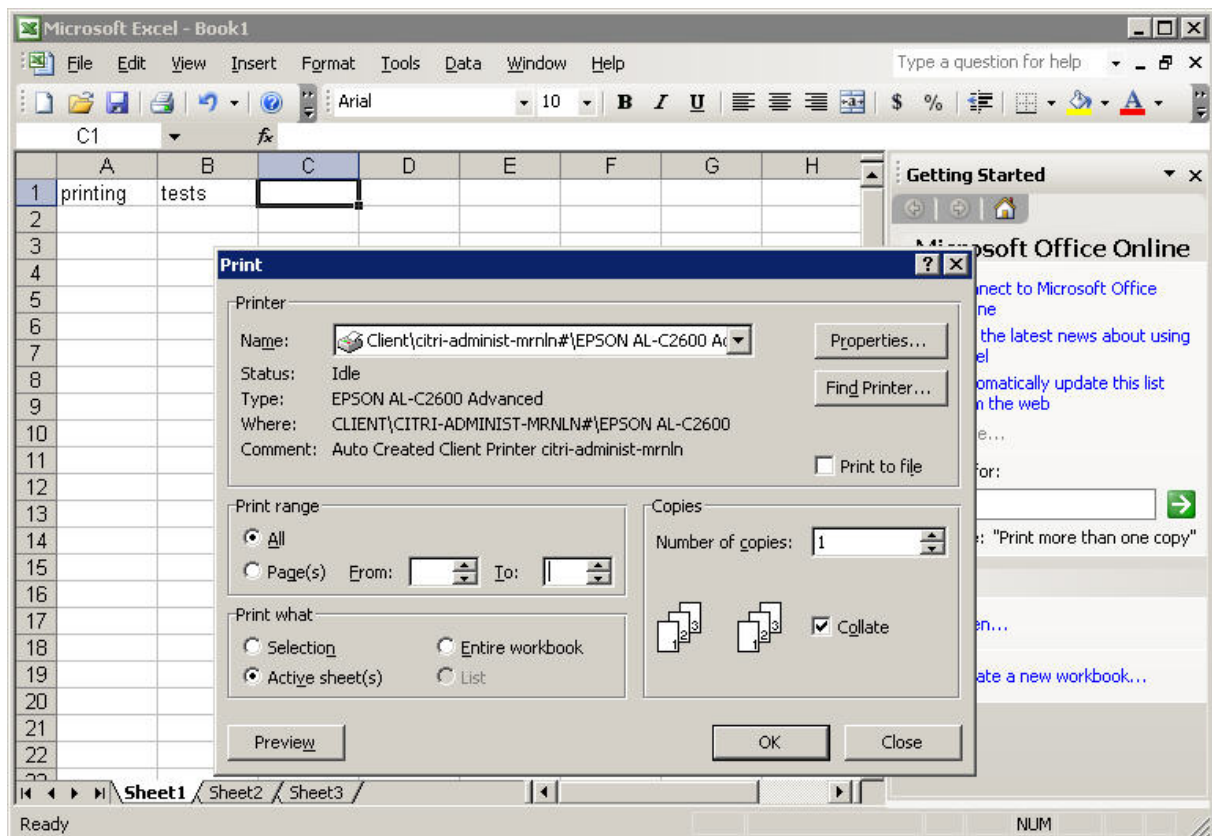
Printer linked to the workstation

Connect the printer to a workstation and install it. And share the printer on the network, because in this case the printer driver has to be installed on the server too. Moreover, a client printer has to be created on the management console. For that, refer to the procedure “Create a client printer in the management console”.

See the procedure “USB Local Printer” or “Printer Installation by Setup”.

The testing process is the same as the other tests.





Printer installed on a workstation, you may see the client printer selected by default.

Conditions of success of the tests:

- A client printer is automatically created on the server.
- No problem to launch the applications by Explorer or by the client.
- The client printer is selected by default when a print is launched.
- The printing is successful.

PARTICULAR DRIVERS

Adobe Generic Postscript driver:

This driver has a specific installation program. In this test we keep the .pdd file of Acrobat.

Epson Postscript with only the .ppd file available:

In this case we use the installation program of the Acrobat Generic Postscript Driver and change the .pdd file by the Epson file. The process is described in the procedure “Adobe Generic Postscript driver installation”.

PCL6 Driver:

This driver uses a specific installation program. In those tests, two printers can be used with that kind of driver: the EPL3000 and the EPL7000. The same program works for both.

To use it, refer to the corresponding procedure “Epson Monochrome Laser P6 Printer Driver Installation”.

PCL5c driver:

Use the .inf file like an ESC/Page driver.

Universal Monochrome Driver:

Sometimes, this driver is not recognized by Windows as a good driver for the printer. To install it, follow the procedure “Universal Monochrome Driver Installation”.

Citrix Universal Print Driver PCL5

This driver is the UPD III included in Presentation Server 4.0. It is only useful to print on a printer installed on a workstation with, at least, Windows 2000. The advantage of this universal driver is we don't have to install on the Citrix server the driver of a printer connected on a client computer on USB for example. To use this driver, some rules must be configured on the server to force it to use the UPD for each auto-created printer:

In "Printing/Client printers/Auto-creation": Auto-create all client printers.

In "Drivers/Universal driver": Use universal driver only.

And in "Drivers/Native printer driver auto-install": disabled

So, we performed the USB test with the printer linked to the workstation. We used two kind of server:

- Windows 2000 Server with Presentation Server 4.0

- Windows 2003 Server with Presentation Server 4.0

With, each time, two workstations: 2000 and XP.

The tests performed with this driver showed the compatibility of the Epson printers with this technology. We had no problem with any printer, each time an auto-created printer appears on the server and the printing was fine.